

# PRO STOFF-KOLLEKTION



**ADOBO**  
YB165



**ARUBA**  
YB093

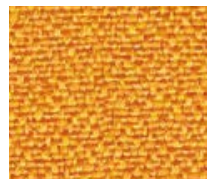
Die Stoff-Kollektion Lucia von Camira ist aus 100% recyceltem Polyester hergestellt. Die kräftige Farbpalette mit mattem Erscheinungsbild eignet sich ideal als dekorative Verkleidung für schallabsorbierende Platten.



**OYSTER**  
YB107



**SANDSTORM**  
YB302



**SOLANO**  
YB088



**TORTUGA**  
YB168



**BELIZE**  
YB105



**LOBSTER**  
YB087



**CALYPSO**  
YB106



**BRIDGETOWN**  
YB102



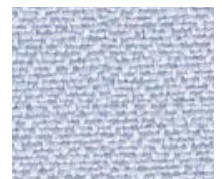
**MARTINIQUE**  
YB004



**TEQUILA**  
YB038



**STEEL**  
YB095



**RUM**  
YB086



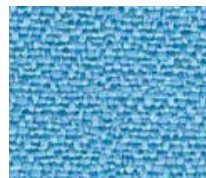
**SOMBRERO**  
YB046



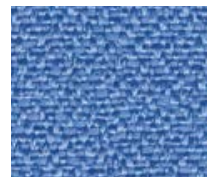
**TAROT**  
YB090



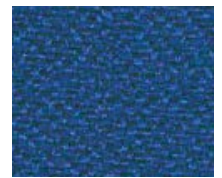
**COSTA**  
YB026



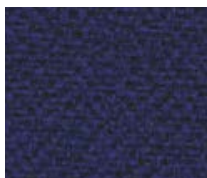
**MARIANNA**  
YB157



**BLUEBELL**  
YB097



**SCUBA**  
YB089



**OCEAN**  
YB100



**MONTSERRAT**  
YB011



**CAMPECHE**  
YB301



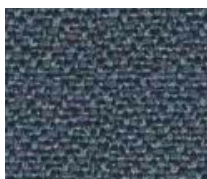
**MADURA**  
YB156



**APPLE**  
YB096



**WINDJAMMER**  
YB047



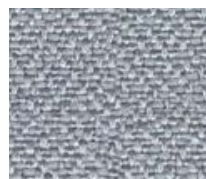
**PASEO**  
YB019



**BLIZZARD**  
YB108



**SLIP**  
YB094



**BURU**  
YB170



**HAVANA**  
YB009